

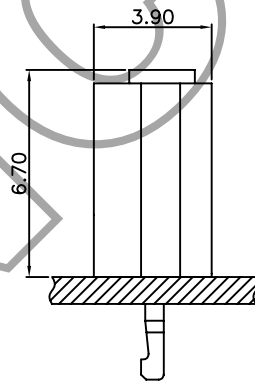
Specifications

Current rating: 3A AC,DC(Per Pin)
 Voltage rating: 250V AC,DC(Per Pin)
 Temperature range: -40°C ~ +105°C
 Contact resistance: 20mΩ Max.
 Insulation resistance: 1000MΩ Min.
 Withstanding voltage: 1000V AC/minute
 Contact E.N for Details

Standards

 E473953

Assembly layout



Ordering code

B2512 I X
 ① ② ③

- ① Series No.
- ② T=Terminal
- ③ Pating:No=Tin G=Gold

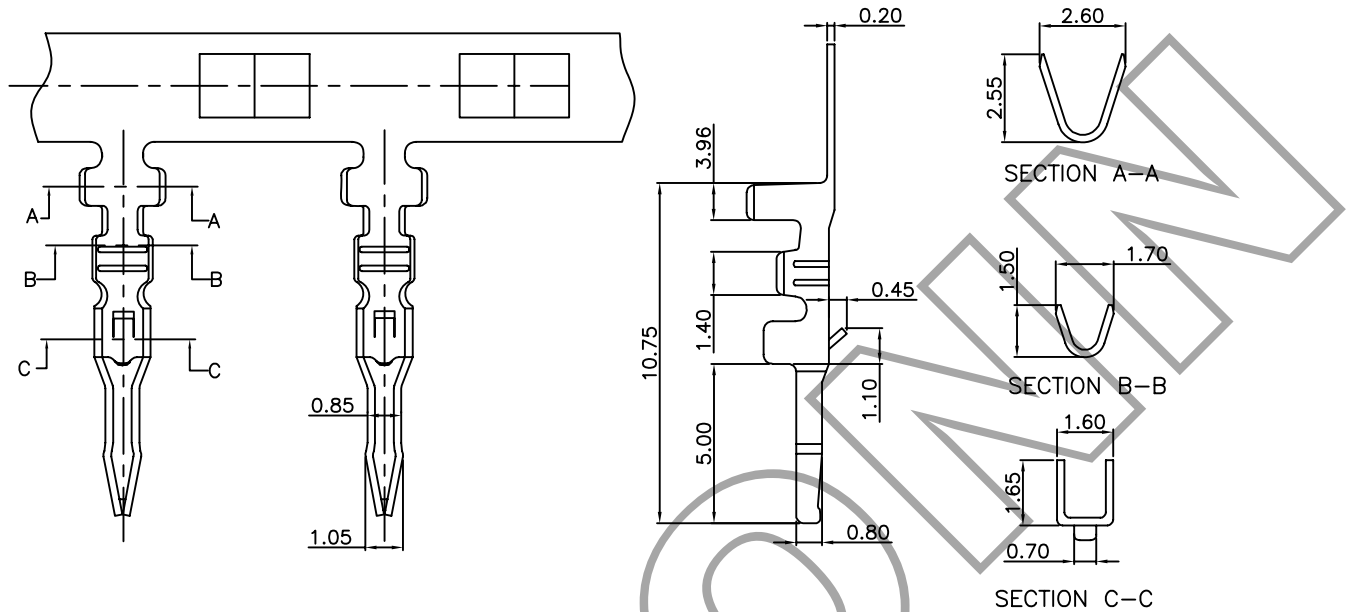
B2512 H-NP
 ① ② ③

- ① Series No.
- ② Housing Type:H=Housing
- ③ No. of circuits

B2512-T — 2.5mm pitch 180° Crimp Terminal

Reference Informations:

*Used in E.N B2512H Series Housing



Ordering Information & Specifications

Unit: mm

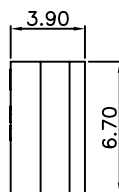
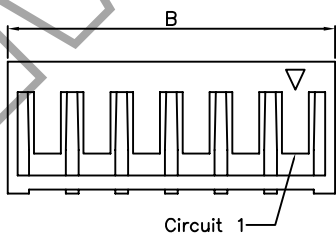
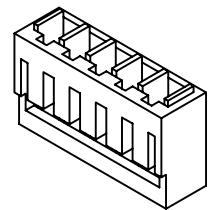
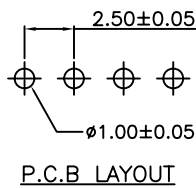
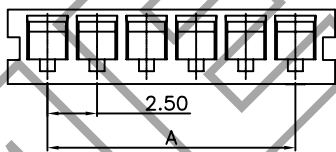
Part No	Wire Range	Insulation O.D.	Material	Finish	Qty/reel
B2512-TP	AWG#22-#28	1.70mm(max)	Brass	Tin-plated	10,000pcs

B2512H — 2.50mm pitch 180° Housing

Reference Informations:

*Material: PA66 UL94V-0

*Suitable E.N B2512 Series Terminal



Ordering Information & Dimensions

PART NO.	Dimensions	
	A	B
B2512H-02P	2.50	6.50
B2512H-03P	5.00	9.00
B2512H-04P	7.50	11.50
B2512H-05P	10.00	14.00
B2512H-06P	12.50	19.00
B2512H-07P	15.00	21.50
B2512H-08P	17.50	24.00
B2512H-09P	20.00	26.50
B2512H-10P	22.50	29.00
B2512H-11P	25.00	31.50
B2512H-12P	27.50	34.00
B2512H-13P	30.00	36.50
B2512H-14P	32.50	39.00
B2512H-15P	35.00	41.50
B2512H-16P	37.50	44.00

Unit: mm